

Gearmotors

Bravo™ Series 12 SUB-FHP - DC Right-Angle Gearmotors



General Specifications - SCR Rated Gearmotors:

- Performance matched for continuous duty service over 60:1 speed range
- Constant torque throughout the range when powered by a full-wave unfiltered SCR-type adjustable speed control having a typical form factor of 1.3 to 1.4

General Specifications - Low Voltage Gearmotors:

- Performance matched for continuous duty service
- Designed for battery power or can be used with a low voltage controller with form factor up to 1.05

Features:

- Worm-type right-angle gearing features hardened, steel worm with bronze worm wheel for long life and quiet operation
- Single piece die cast aluminum alloy housing is vacuum impregnated with Resinol RT for protection and sealing
- Light weight gearbox combines high tensile strength along with being precision machined for alignment of bearings and gearing
- High temperature Nitrile seals for optimum seal life
- Gearbox provided with solid output shaft, but can be converted to a hollow output shaft. Simply remove the solid shaft by removing the Snap rings
- T-base feet provided are removable to convert to face mounting
- Optional conduit box available, see page 342

IEC Motors

DC Motors

Gearmotors

AC / DC Controls

Accessories / Kits

Mods / Factory
Options

X-Ref / Index

Tech Information

Terms / Warnings

**Bravo™ Series 12 SUB-FHP - DC
Right-Angle Gearmotors**

90 Volts - Totally Enclosed - Right-Angle

| Output RPM | F.L. Torque (Lb.In.) | Input HP | Catalog Number | Stock |
|------------|----------------------|----------|----------------|-------|
| 28 | 125 | 1/8 | M1135292.00 | ✓ |
| 45 | 87 | 1/8 | M1135291.00 | C/A |
| 58 | 158 | 1/4 | M1135290.00 | ✓ |
| 90 | 100 | 1/4 | M1135289.00 | ✓ |
| 115 | 85 | 1/4 | M1135288.00 | C/A |
| 167 | 61 | 1/4 | M1135287.00 | ✓ |
| 250 | 46 | 1/4 | M1135286.00 | ✓ |

| Model Number | Enclosure | Gearmotor Type & Frame | Ratio to 1 | Arm. Volts DC | F.L. Amps. DC | ♥Notes |
|--------------|-----------|------------------------|------------|---------------|---------------|-----------|
| M34D17NZ31 | TENV | 12B60-34D | 61 | 90 | 1.6 | S, US, 12 |
| M34D17NZ30 | TENV | 12B39-34D | 39 | 90 | 1.6 | S, US, 12 |
| M34D17FZ7 | TEFC | 12B30-34G | 30 | 90 | 2.8 | S, US |
| M34D17FZ6 | TEFC | 12B19-34G | 19 | 90 | 2.6 | S, US |
| M34D17FZ5 | TEFC | 12B15-34G | 15 | 90 | 2.6 | S, US |
| M34D17FZ4 | TEFC | 12B11-34G | 11 | 90 | 2.6 | S, US |
| M34D17FZ3 | TEFC | 12B7-34G | 7 | 90 | 2.6 | S, US |

C/A - Check Availability

♥ Note listing on inside back flap

Note 12 - TENV

Specifications are subject to change without notice

12 Volt - TENV - Right-Angle

| Output RPM | F.L. Torque (Lb.In.) | Input HP | Catalog Number | Stock |
|------------|----------------------|----------|----------------|-------|
| 27 | 134 | 1/8 | M1135285.00 | C/A |
| 45 | 94 | 1/8 | M1135284.00 | ✓ |
| 58 | 158 | 1/4 | M1135297.00 | ✓ |
| 90 | 100 | 1/4 | M1135296.00 | C/A |
| 115 | 85 | 1/4 | M1135295.00 | C/A |
| 167 | 61 | 1/4 | M1135294.00 | C/A |
| 250 | 46 | 1/4 | M1135293.00 | ✓ |

| Model Number | Enclosure | Gearmotor Type & Frame | Ratio to 1 | Arm. Volts DC | F.L. Amps. DC | ♥Notes |
|--------------|-----------|------------------------|------------|---------------|---------------|--------|
| M34D17NZ29 | TENV | 12B60-34C | 61 | 12 | 14.0 | S, US |
| M34D17NZ28 | TENV | 12B39-34C | 39 | 12 | 15.0 | S, US |
| M34D17NZ36 | TENV | 12B30-34F | 30 | 12 | 24.0 | S, US |
| M34D17NZ35 | TENV | 12B19-34F | 19 | 12 | 24.0 | S, US |
| M34D17NZ34 | TENV | 12B15-34F | 15 | 12 | 23.0 | S, US |
| M34D17NZ33 | TENV | 12B11-34F | 11 | 12 | 21.0 | S, US |
| M34D17NZ32 | TENV | 12B7-34F | 7 | 12 | 23.0 | S, US |

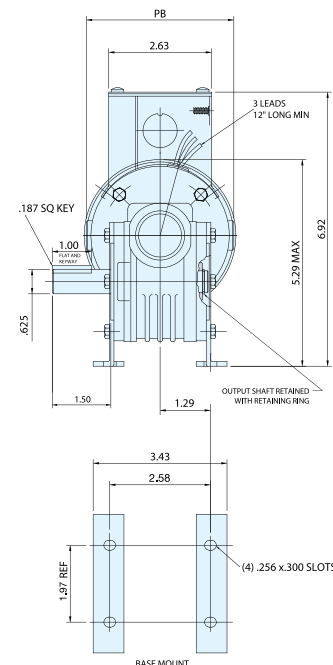
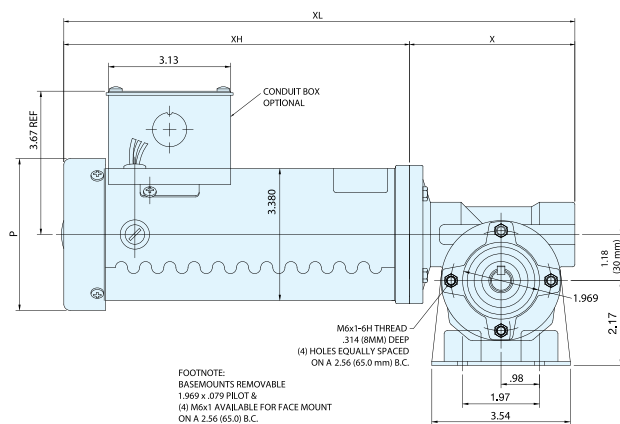
C/A - Check Availability

♥ Note listing on inside back flap

Specifications are subject to change without notice

Notes:

- 1 Conduit box not supplied with the gearmotor. Mounting provisions are provided and can use conduit box kit catalog number M1760007.00 found on page 342.
- 2 For solid double output shaft, consult factory.



SCR 90 Volt Rated (IN)

| P | X | XL | XH | PB |
|------|------|-------|------|------|
| 3.38 | 4.32 | 11.07 | 6.75 | 4.00 |
| 3.38 | 4.32 | 11.07 | 6.75 | 4.00 |
| 3.88 | 4.32 | 13.16 | 8.84 | 3.76 |
| 3.88 | 4.32 | 13.16 | 8.84 | 3.76 |
| 3.88 | 4.32 | 13.16 | 8.84 | 3.76 |
| 3.88 | 4.32 | 13.16 | 8.84 | 3.76 |
| 3.88 | 4.32 | 13.16 | 8.84 | 3.76 |
| 3.88 | 4.32 | 13.16 | 8.84 | 3.76 |

Low Voltage 12V (IN)

| P | X | XL | XH | PB |
|------|------|-------|------|------|
| 3.38 | 4.32 | 10.57 | 6.25 | 4.21 |
| 3.38 | 4.32 | 10.57 | 6.25 | 4.21 |
| 3.38 | 4.32 | 11.82 | 7.50 | 4.21 |
| 3.38 | 4.32 | 11.82 | 7.50 | 4.21 |
| 3.38 | 4.32 | 11.82 | 7.50 | 4.21 |
| 3.38 | 4.32 | 11.82 | 7.50 | 4.21 |
| 3.38 | 4.32 | 11.82 | 7.50 | 4.21 |
| 3.38 | 4.32 | 11.82 | 7.50 | 4.21 |



- IEC Motors
- DC Motors
- Gearmotors
- AC / DC Controls
- Accessories / Kits
- Mods / Factory Options
- X-Ref / Index
- Tech Information
- Terms / Warnings